



CERTH

CENTRE FOR
RESEARCH & TECHNOLOGY
HELLAS

**RESEARCH
DEVELOPMENT
INNOVATION**

Mission

- Promotion of the threefold framework: Research-Development-Innovation
- Conducting High Quality Scientific Research
- Development of Innovative Products and Services
- Strong partnerships with the National and International Industry
- Strong collaboration with Research Centers and Universities in Greece and Abroad

Overview

● **Foundation:** 2000

● **Legal form:** Legal entity governed by private law under the auspices of the General Secretariat for Research & Innovation of the Ministry of Development and Investment

● **Personnel:** >1100

● **Annual revenues:** >50 mil. €. (3-year average)

77% from competitive research projects through open call for proposals
10% from government institutional funding
13% from bilateral industrial research contracts

● **Numerous distinctions and awards** (Descartes Prize, ERC Advanced Grant, Trading Agent Competition Award, etc)



Geographical Presence

6

Regions

Attica, Central Macedonia,
Western Macedonia,
Thessaly, Epirus & South
Aegean



8

Cities

Athens, Thessaloniki, Larissa,
Volos, Ptolemais, Ioannina &
Rhodes



Research and Innovation facilities



>47€
mil.

Innovative research facilities and modern laboratory equipment worth >47 million €

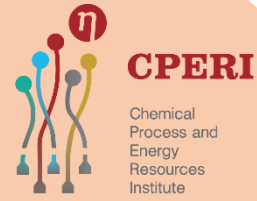


Institutes

INFORMATION & COMMUNICATION
TECHNOLOGIES



SUSTAINABLE
PROCESSES & ENERGY
RESOURCES



CPERI
Chemical
Process and
Energy
Resources
Institute



SUSTAINABLE
MOBILITY AND
TRANSPORT
NETWORKS



APPLIED LIFE
SCIENCES



Institute for Bio-Economy
and Agri-Technology

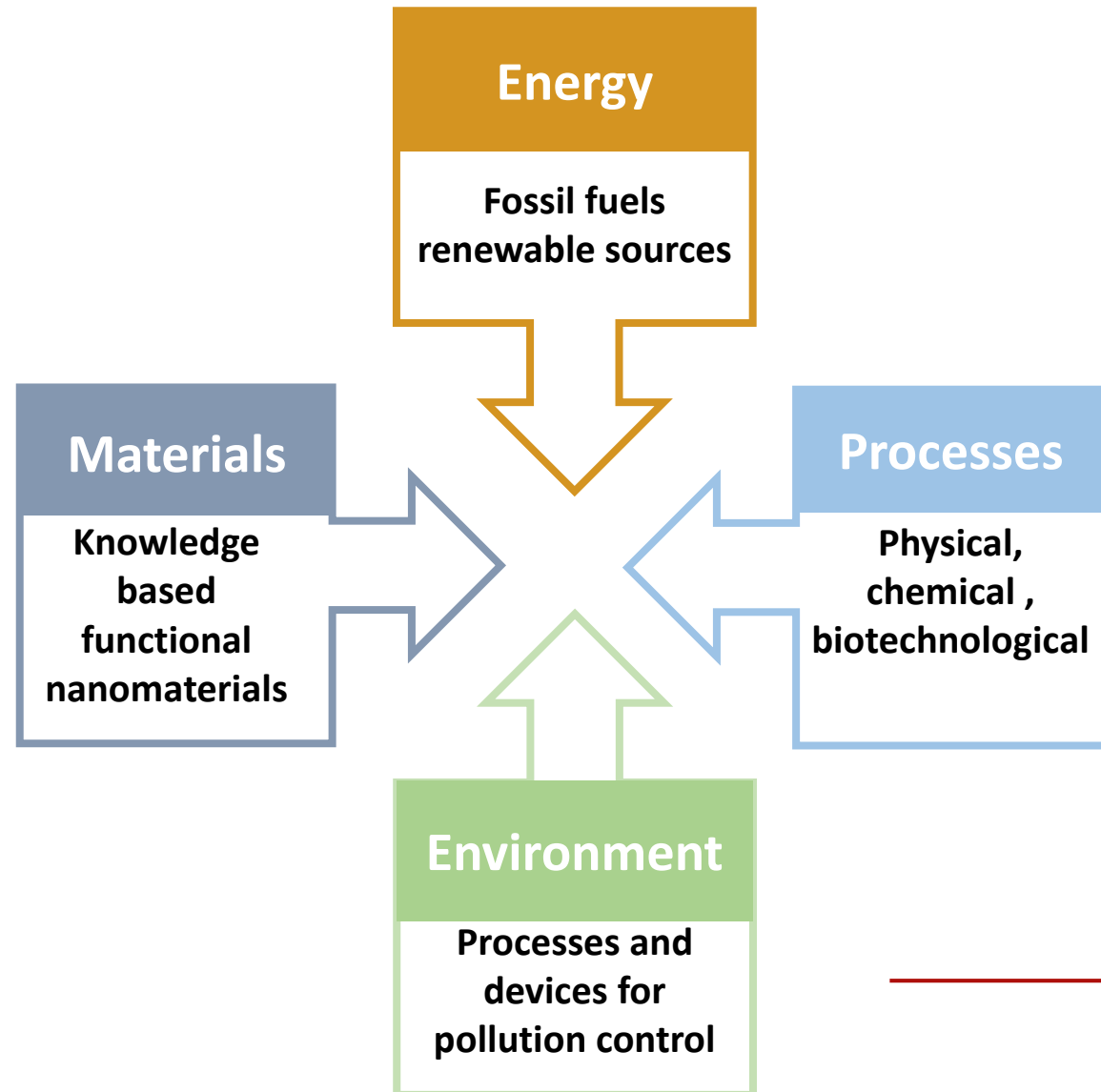
AGRICULTURAL
TECHNOLOGY AND
BIOSYSTEMS ENGINEERING



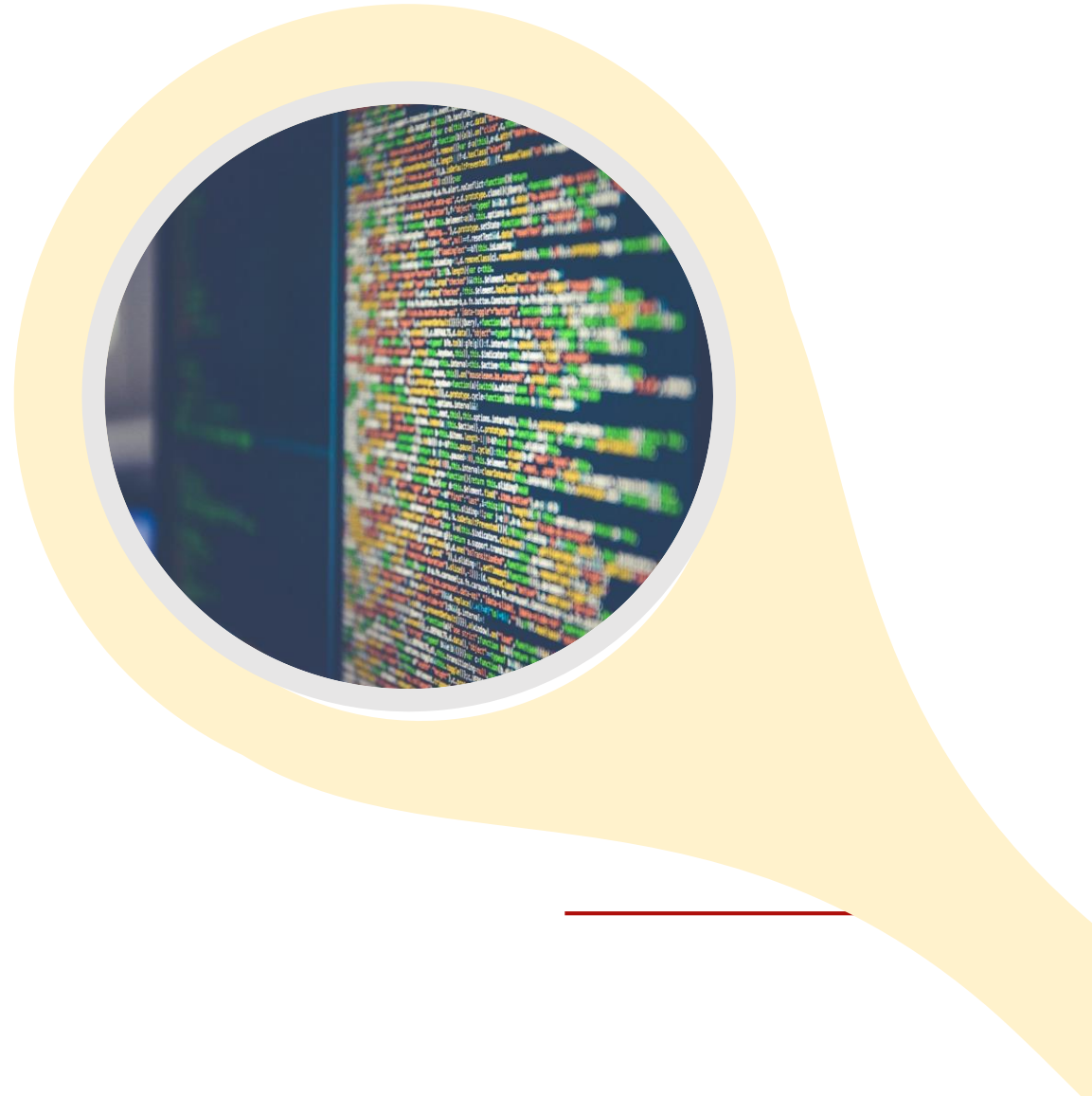
CERTH
CENTRE FOR
RESEARCH & TECHNOLOGY
HELLAS



Chemical Process and Energy Resources Institute - CPERI



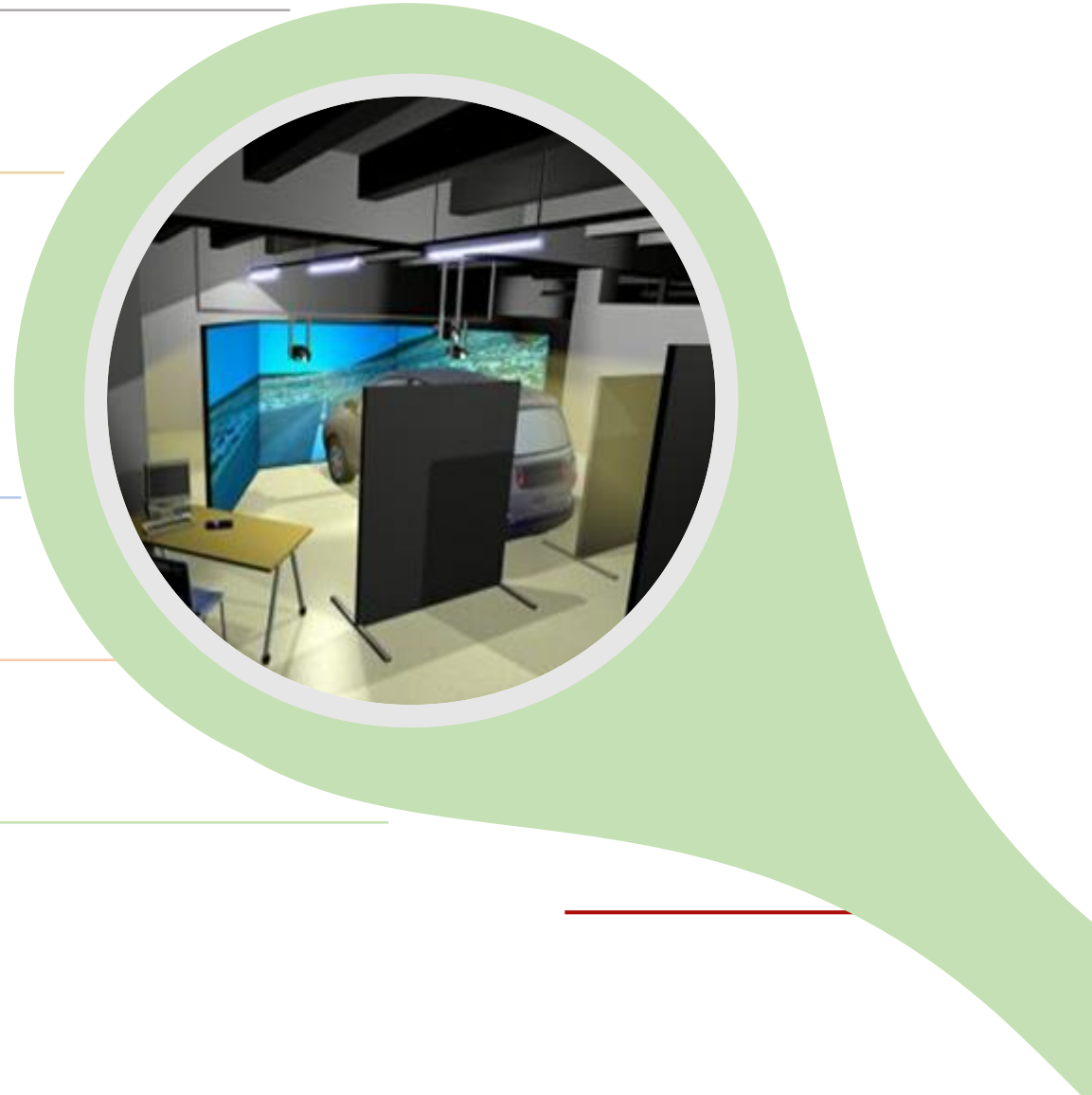
- Robotics, Visual Computing, Virtual and Augmented Reality
- Telecommunication, Energy and Sensors Networks, Internet of Things
- Internet Technologies, Multimedia, Social Networks Analytics, Fake News
- Artificial Intelligence, Machine Learning, Systems for Prediction and Decision making
- Biometrics and Security Systems, Cybersecurity, Blockchain
- Remote Sensing and Environment



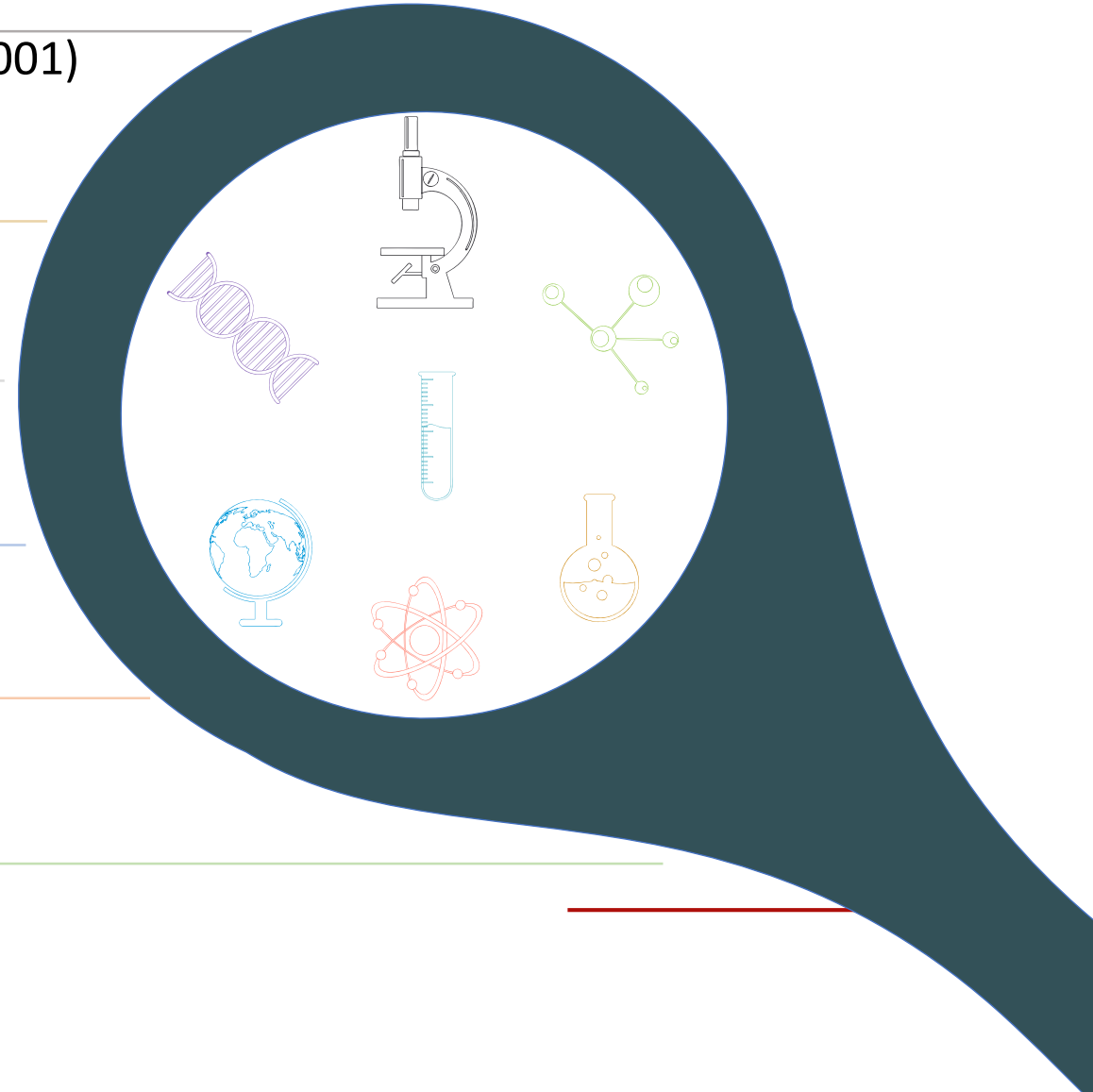


Hellenic Institute of Transport - HIT

- Intelligent transport systems for urban mobility and traffic management
- Real time information systems for human mobility (infomobility)
- Intelligent freight transport and logistics
- Risk analysis in road tunnels
- Safety in road construction work zones
- Systems for remote device management



- Production, management and analysis of Big BioData using certified procedures (ISO15189, ISO22301, ISO27001)
- Coordination of Hellenic Precision Medicine Network on Cancer
- Advanced molecular diagnostics | Flagship Action on SARS-COV-2 | Genomics surveillance
- Pharmacological research focusing on drug safety and pharmacovigilance
- Design, organization and coordination of international multi-center clinical studies
- e-Health for patients and citizens





Institute of Bio-economy and Agri-technology – IBO

Bio-economy

Agri-technology

Automation of agricultural production systems

Farm management, Precision Agriculture

Digital Agriculture

Zero carbon footprint agriculture



Promotion of Knowledge Based Entrepreneurship @ CERTH

Joint efforts of CERTH's
Institutes for the **creation of
5 new European
Digital Innovation Hubs**

I4byDesign

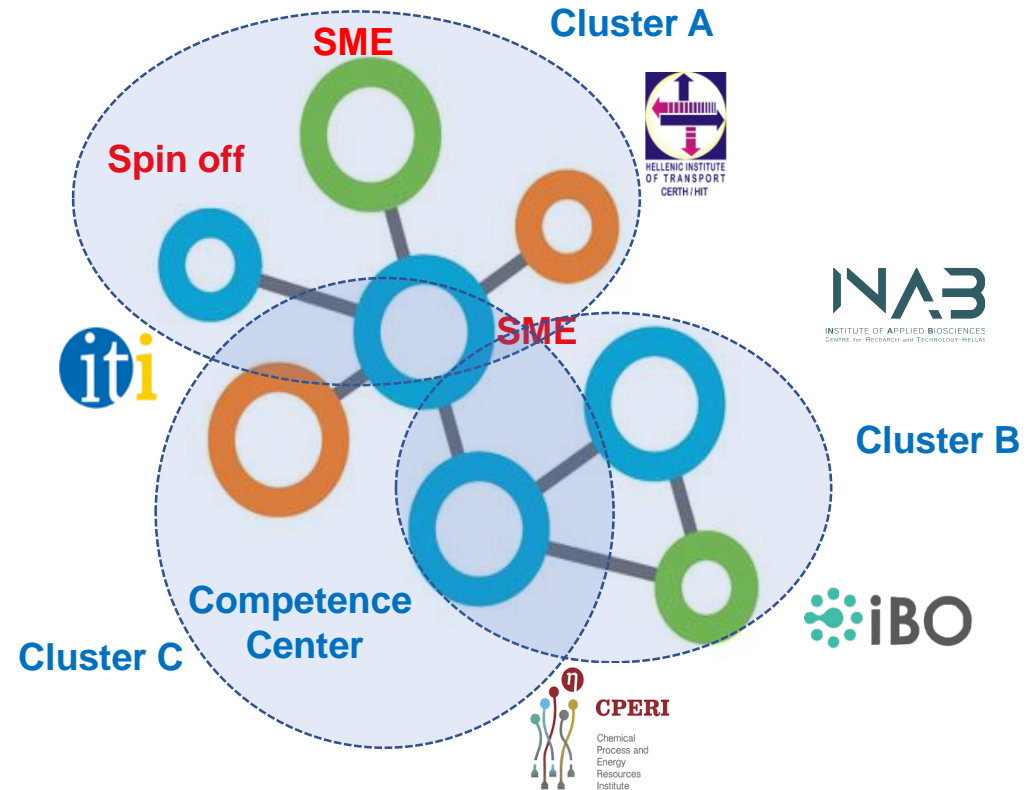
Industry4.0

Competence Center

Joint action of the 5 institutes
of CERTH (2020)

**Creation of 4 National
Competitive Clusters at CERTH**

AI Cluster, Technopolis (2019)
Smart Buildings Cluster (2019)
Agile 4.0 – Industry 4.0 Cluster (2020)
MOBILOC – Smart Logistics Cluster (2020)



**Founding
17 Spin-off Companies**

CERTH @ Thess-INTEC – 2/6 of mature MegaProjects


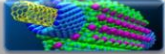




Thess-INTEC : Flagship Infrastructure responding to the needs of research and business community

ITI is the coordinator of MP3, HIT coordinates MP5. CPERI co-coordinates MP4



Thess-INTEC



-  MP1- Advanced materials and manufacturing Processes
-  MP2- Flexible Organic Nanotechnology Applications
-  MP3- Artificial Intelligence and Simulation Applications
-  MP4- Renewable and zero/low carbon footprint technologies
-  MP5- Competence Center for business & Logistics challenges
-  MP6- Future Mobility Applications



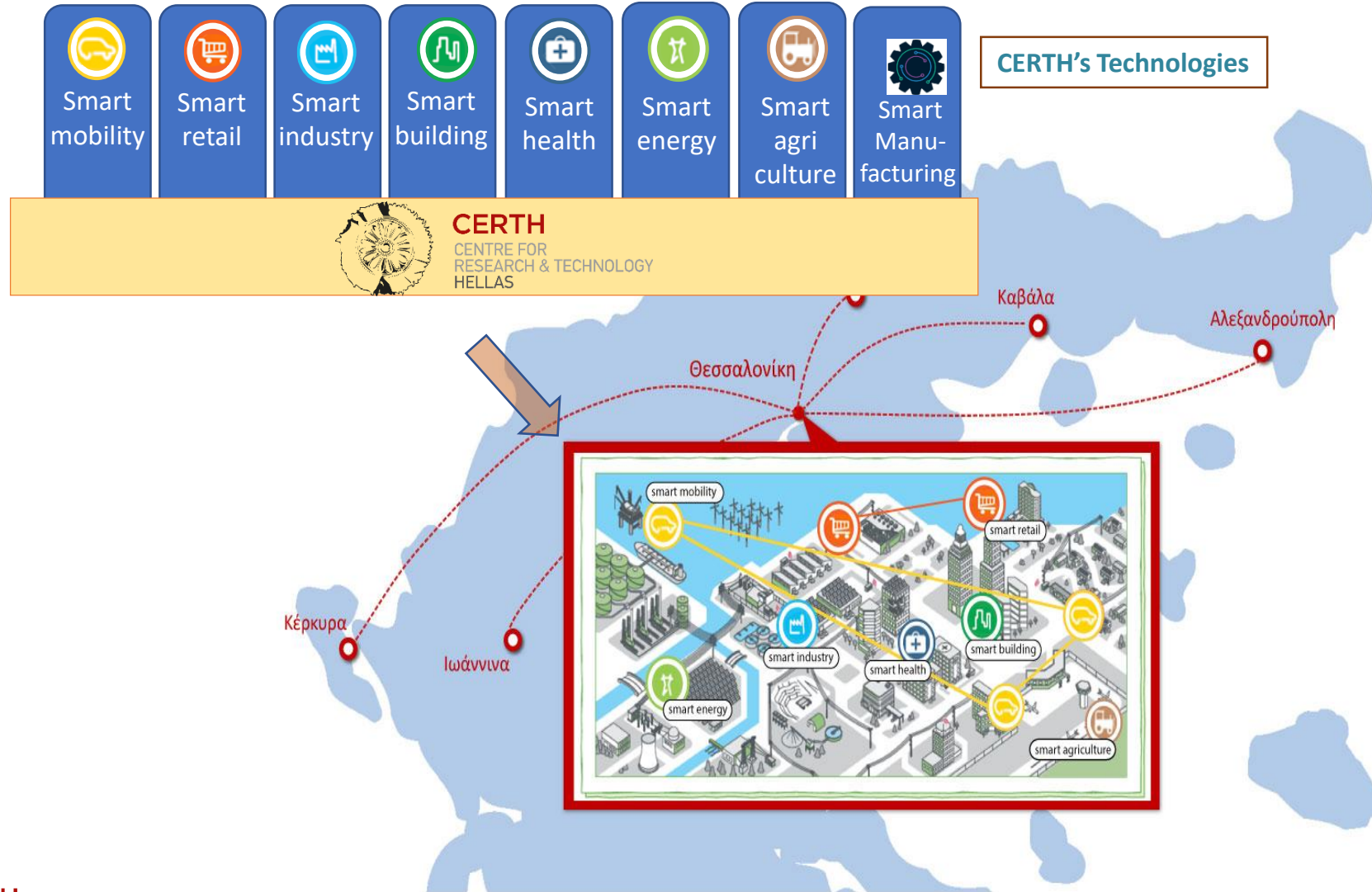
Project PHASE A

Total Building Area : 24.000 m²

Construction Budget : € 72 Meuro

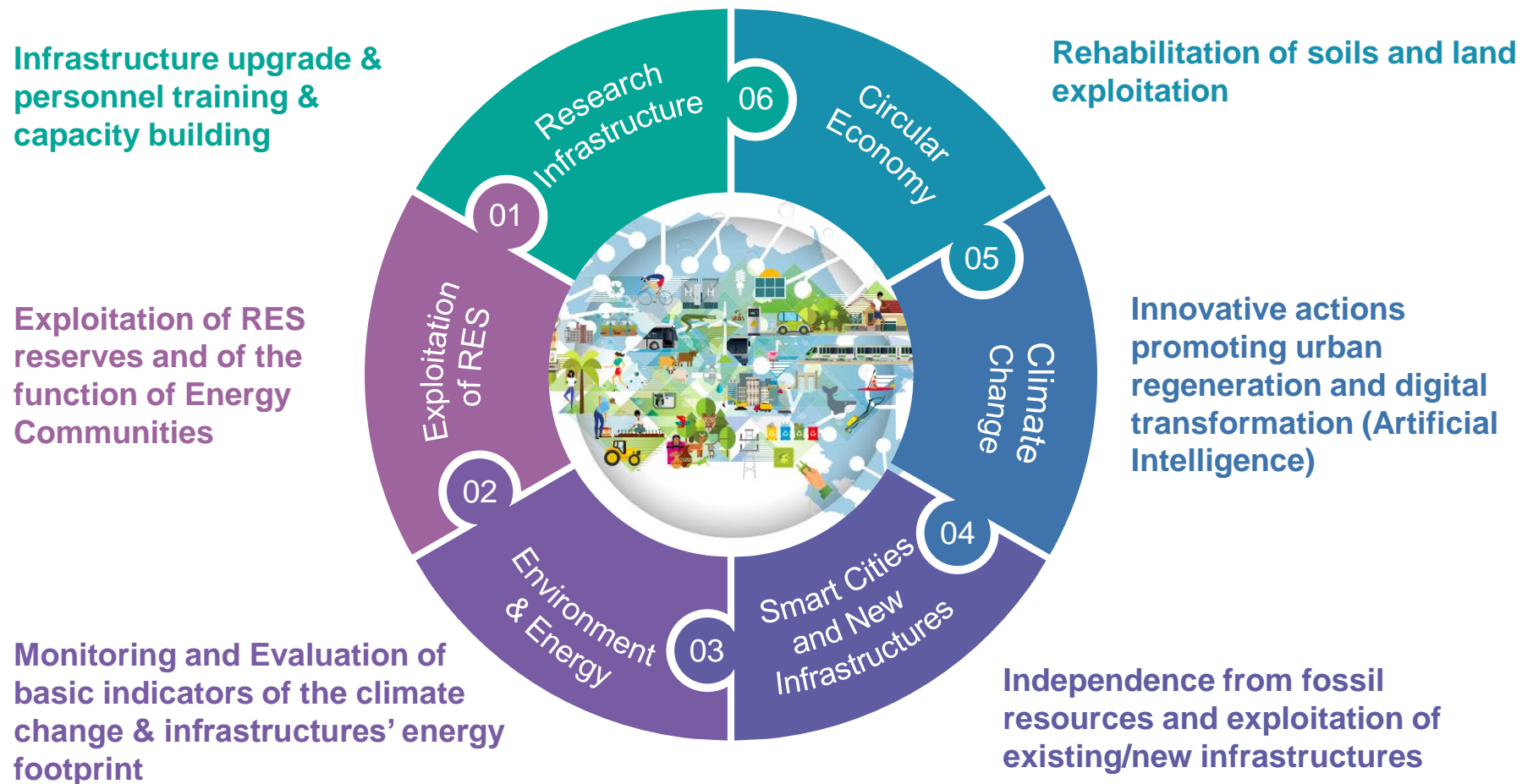


Northern Greece – a test field for CERTH's technologies



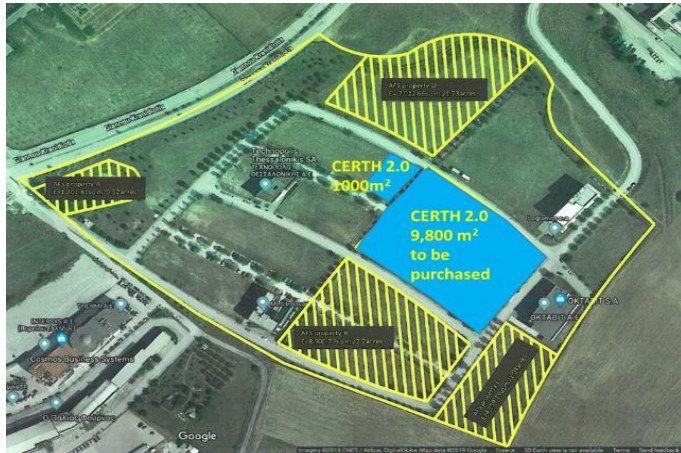
Actions for the post-lignite era in Western Macedonia

Proposals of 30 Meuros, in the framework of the Just Transition Development Plan, Region of Western Macedonia

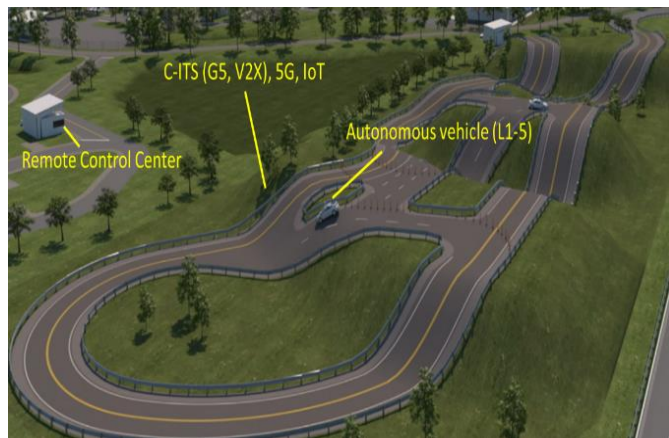


CERTH 2.0 – R&I Infrastructures for the next decade

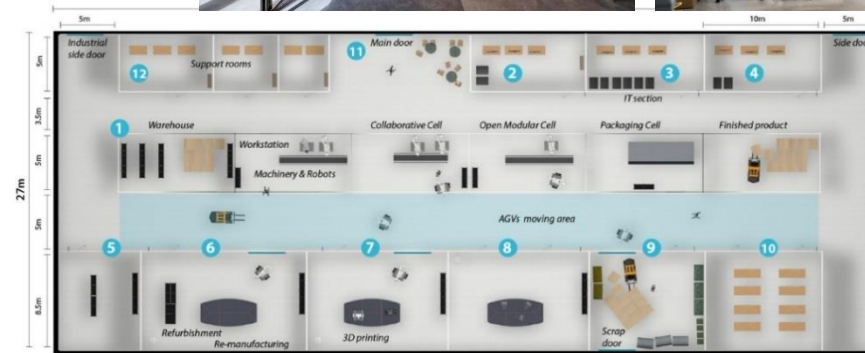
Funding from EIB/RRF, 34 Meuro



The HIT i-MILE | Intelligent Transport Systems Test Bed



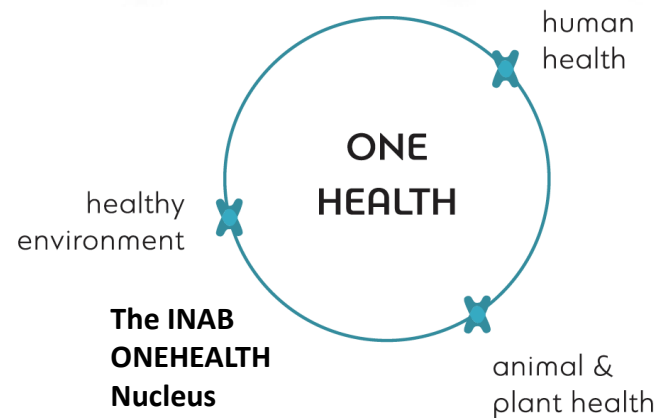
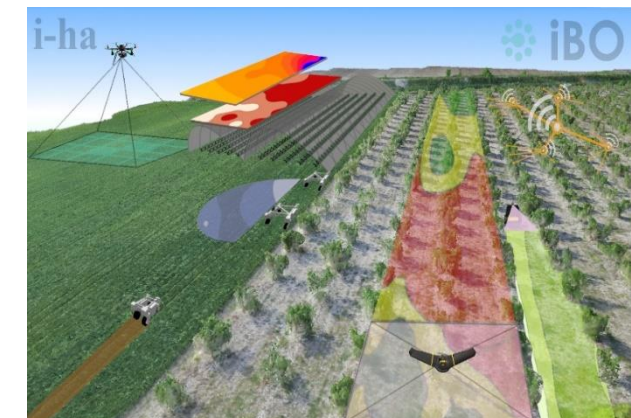
“The Factory”
CPERI



ITI - Industry 4.0
test facility
AI Nucleus

- 1 Experimental Production Line
- 2 Digital Twin
- 3 HPC / AI Infrastructure
- 4 Security & Safety
- 5 Material Characterization
- 6 Maintenance
- 7 Additive Manufacturing
- 8 Co-creation VR/AR
- 9 Circular Economy
- 10 Education & Training
- 11 Reception area
- 12 Other facilities

i-HECTARE (i-ha) | Arable-Orchard-
Greenhouse Autonomous Farming Facility



Project 1.1: Industry 4.0 Testbed



Experimental Production Line



Additive Manufacturing Lab



Materials Characterization Lab



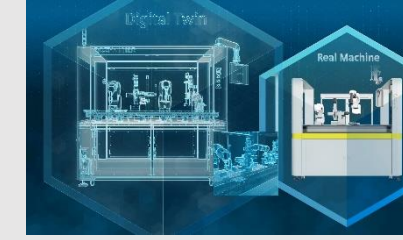
Materials Chemistry Lab



Co-creation VR/AR



Digital Energy Lab



Digital Twin infrastructure



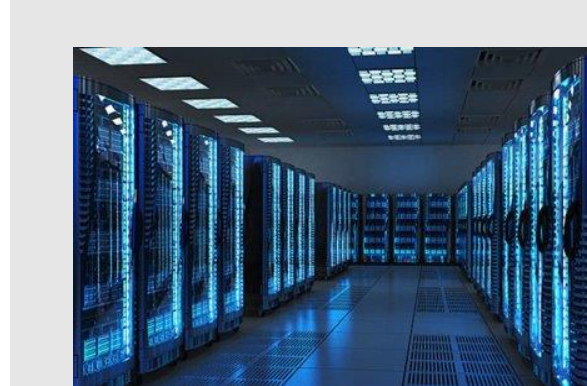
Robotics Infrastructure

nearly Zero Energy Building
(4.940m²)

Thessaloniki Innovation and
Technology Centre (Thess INTEC),
Municipality of
Thermaikos, Thessaloniki

- ❖ **Advanced** testbed facilities, rich in diverse and sophisticated **robots, additive manufacturing, AI and ICT technologies** for the experimentation with a plethora of novel Industry 4.0 solutions forming a **highly sophisticated Digital Innovation Hub**.
- ❖ **Adaptive, real** production line/shop floor with state-of-the-art industrial systems, robots and software tools for the **testing, verification and validation** of diverse Industry 4.0 processes, prior to **their introduction into real-world manufacturing supporting the whole lifecycle** (from design, engineering to commissioning and end-of-life support).

Project 1.2: AI Nucleus



HPC Infrastructure



Deep Learning Infrastructure



AI Infrastructure

❖ **High-Performance Computing and AI Infrastructure** that will support and further enhance:

- **Big Data** Storage and support for **Exascale** data computing
- **Distributed** Deep Learning Networks computations
- **Federated learning** operation for AI application on edge devices, of **low energy consumption**
- Scalable **Interconnected** IoT networks
- Novel services provision in the fields of **analytics**, **AI explainability** and **decision optimization**
- **Benchmarking** Industry 4.0 solutions and operations

nearly Zero Energy Building (1.340m²)

Technopolis ICT Business Park,
Thermi, Thessaloniki

Chemical Process and Energy Resources Institute

P4.2 The Factory

- Basic and applied research activities for the development of innovative technologies for the production of products and services to achieve technological excellence in the fields of Energy, Environment, Materials Technologies
- Creating start-ups. The infrastructure will also host start-ups from the other CERTH institutes.



Building (almost) zero energy consumption(3.560 m²)

Technopolis Thessaloniki,
Municipality of Pylaia-Hortiatis,
Prefecture of Thessaloniki

- **Lab infrastructures :**

- > Open space of 11 m height for development of pilot units
- > Machine shop
- > Laboratories (8)

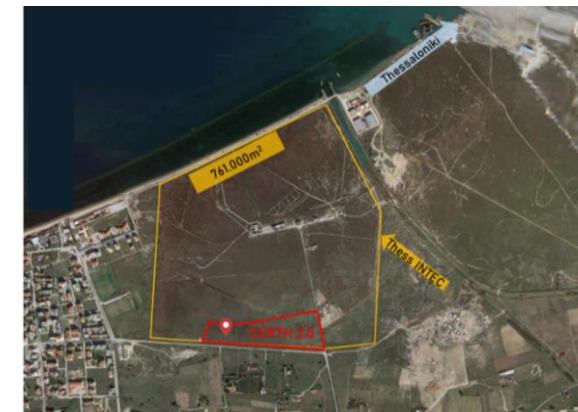
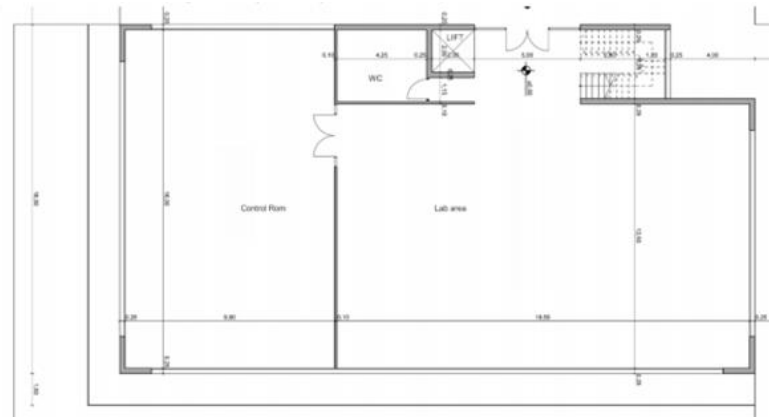
- **Research areas :**

- > Membrane technologies for energy and environmental applications
- > Innovative / zero carbon fuels and chemicals
- > Utilization and sequestration of CO₂
- > Production of green hydrogen
- > Materials technology for biotechnology and health applications

Chemical Process and Energy Resources Institute

P4.1 CPERI Innovation Cell

- Co-coordinator of MP4. Renewable and zero/low carbon footprint technologies

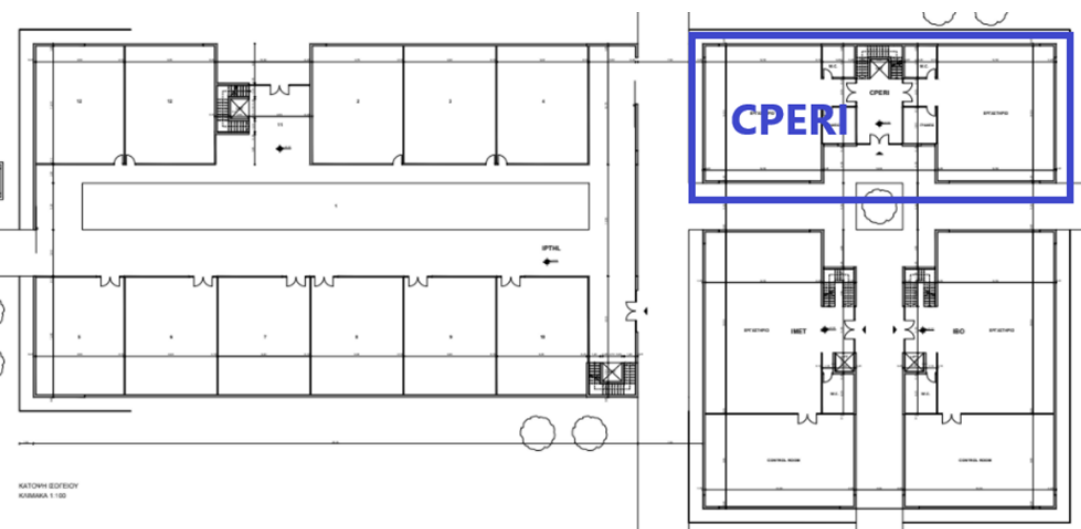


Building (almost) zero energy consumption (1000 m²)

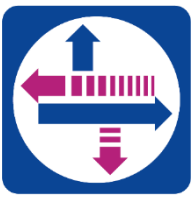
ThessIntec Technology Park
(Municipality of Thermaikos,
Prefecture of Thessaloniki)

- **Research areas :**

- > Development of new catalytic technologies for the production of fuels, biofuels and biochemicals of low carbon footprint
- > Materials and methods of hybrid/thermochemical energy storage
- > Integrated solutions for the maritime sector
- > Infrastructure of automation and control via internet
- > Regeneration system for fuel cells

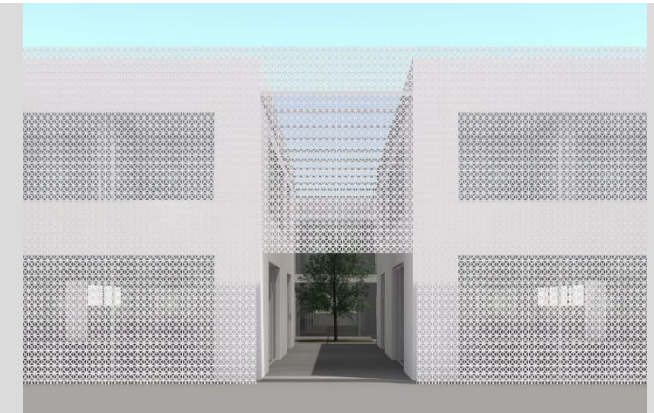


Hellenic Institute of Transport



Project 3.1: "HIT's new zero-footprint building and Research Infrastructures"

- ❖ Development of new building and research infrastructures for CErTH-HIT:
 - ❖ **New Building** of a total area of 960 sq.m. that will also host the Control Tower of the new Protected Test (Project 3.2)
 - ❖ **5 research laboratories**



Data Analytics LAB



Digital Twins LAB



Intelligent Logistics LAB

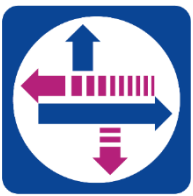


L & PLEV Certification LAB



A-test LAB

- ✓ *Combined capabilities in established transport research domains of CErTH-HIT, towards the accomplishment of new goals within the Smart Cities context*
- ✓ *Interfaces between the transport domain and other sectors (development of new vehicles, monitoring of road infrastructures)*
- ✓ *Development of an integrated environment for extending the knowledge about smart future mobility in smart cities*



Project 3.2: “iMile: Protected Test Track Circuit & Testbed in Real-world network”

- ❖ **Protected test track:**
 - ❖ i-mile test track circuit (1,5 kms)
- ❖ **Real-world environment:**
 - ❖ i-mile real-world test bed (5,5 kms)



- ✓ *Increased understanding and testing of new technologies in the transport domain (autonomous vehicles, Vehicle-to-Vehicle and Vehicle-to-Infrastructure digital connectivity technologies)*
- ✓ *Support of test cases for the use of connected and automated vehicles related to road safety, traffic efficiency and levels of service provided*
- ✓ *Further development of Cooperative Intelligent Transportation Systems aiming to enhance dynamic traffic management and support sustainable mobility objectives*

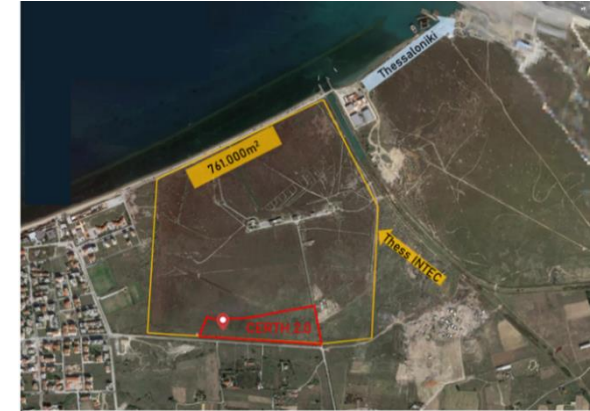
P2.1 OneHealth Nucleus

State-of-the-art research ecosystem for innovative applications in Life Sciences

- modeling of biological processes
- pharmacological research
- planning (and elaboration) of clinical trials
- advanced diagnostic
- e-health



Building (almost) zero energy consumption (3.000m²)



ThessIntec Technology Park
(Municipality of Thermaikos,
Prefecture of Thessaloniki)



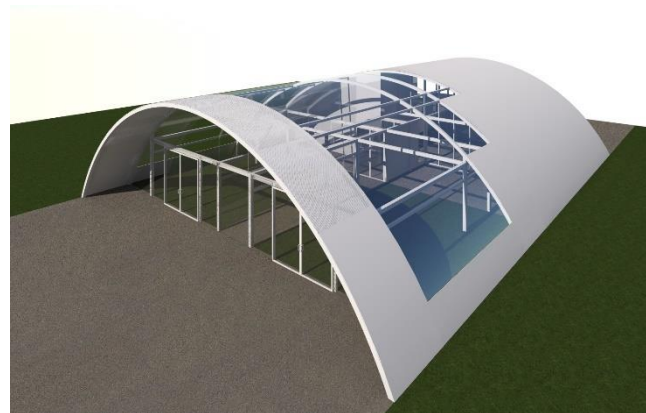
Lab infrastructures :

- Animal house with related workshops
- Next generation sequencing unit
- Metabolic analysis unit
- Microbial Cell Factory Facility
- Biobanks
- High performance computing units
- End user interaction area
- Forum, a place of interaction with its partners and the general public

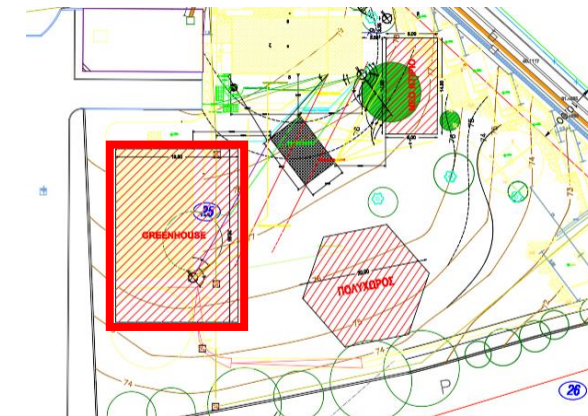
P6.2 INAB SMART Agri-Food pilot facility (Greenhouse)

Intelligent greenhouse for simulating climatic conditions

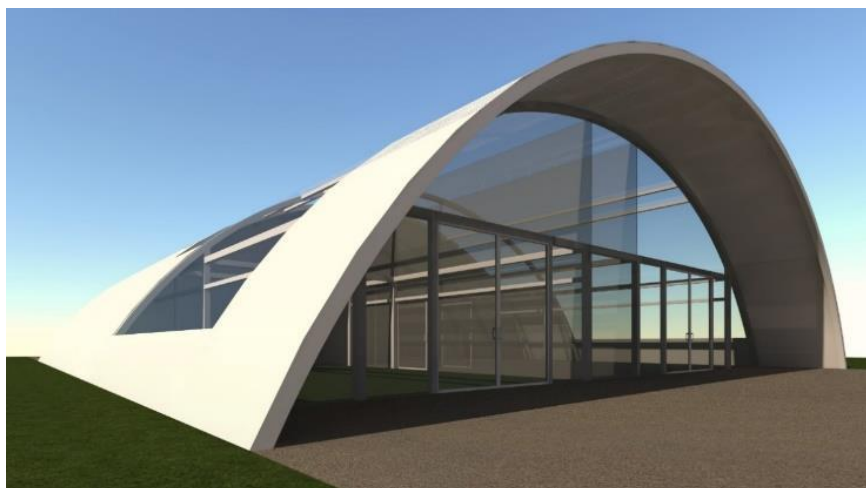
- development of innovative crops
- development of multi-trophic systems
- selection of genetic material
- yield studies of new improved varieties



Building (almost) zero energy consumption (420 m²)



CERTH Headquarters, Themi,
Thessaloniki



Lab infrastructures

- aeronautical and multifunctional systems infrastructure
- phenotyping systems
- new marine organisms development infrastructure
- recording infrastructure, yields of plant and marine organisms

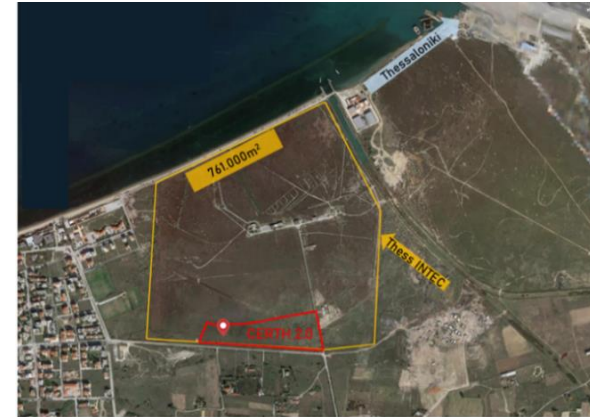
Bio-economy and Agro-technology Institute

P5.1 iBO-Tech

- Fusion of all technological developments in agriculture and other applied sciences.
- Digitization and automation of production systems leading to sustainable and environmentally safe agriculture.
- State-of-the-art infrastructure for the design and development of intelligent systems and automation for agriculture.



Building (almost) zero energy consumption (1.080m²)



ThessIntec Technology Park
(Municipality of Thermaikos,
Prefecture of Thessaloniki)



- **Lab infrastructures:**

- > Digital Agriculture Infrastructures
- > Agro-Robotics Infrastructures
- > IoT development and support infrastructure
- > Data analysis and artificial intelligence laboratory

Bio-economy and Agro-technology Institute

P5.2 iBO-Hive

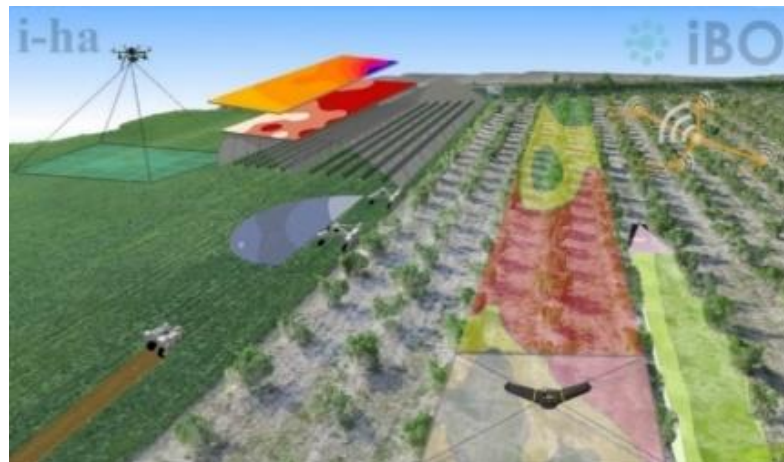
- Cell of innovation, research and development in the field of Agro-Technology and Agro-Robotics.
- State-of-the-art infrastructure with laboratories and a pilot farm for applied research on the agriculture of the future.
- Fusion of all technological developments in an ecosystem of interdisciplinary research units
- Business innovation center for the dissemination of research results



Building (almost) zero energy consumption (2.300m²)



Thessaly
Municipality of Rigas Feraios,
Prefecture of Magnisia



- i-hectare**
- Pilot farm
 - Area for the study and control of cutting-edge technology applications in agriculture
 - Demonstration area for research and applications of new technologies results dissemination
- Total area 50.000m²

- **Research units :**
 - > **Agri-UAV:** agricultural unmanned vehicles - test and benchmarking facilities for aerial vehicles
 - > **Agri-robotic:** agricultural unmanned vehicles - test and benchmarking facilities for ground vehicles
 - > **Agri-Sustain:** Environmentally Sustainable Agriculture - Sustainable Agriculture and Zero Emissions
 - > **Agri-Human:** Human-machine interaction / Ergonomics-Biomechanics
 - > **Agro-intelligent:** Data analytics center